

build better™
DIRTT



DIRTT BUDGET PRICING

348 W Hospitality Ln STE 100, San Bernardino, CA 92408

9/16/2025 – REV1

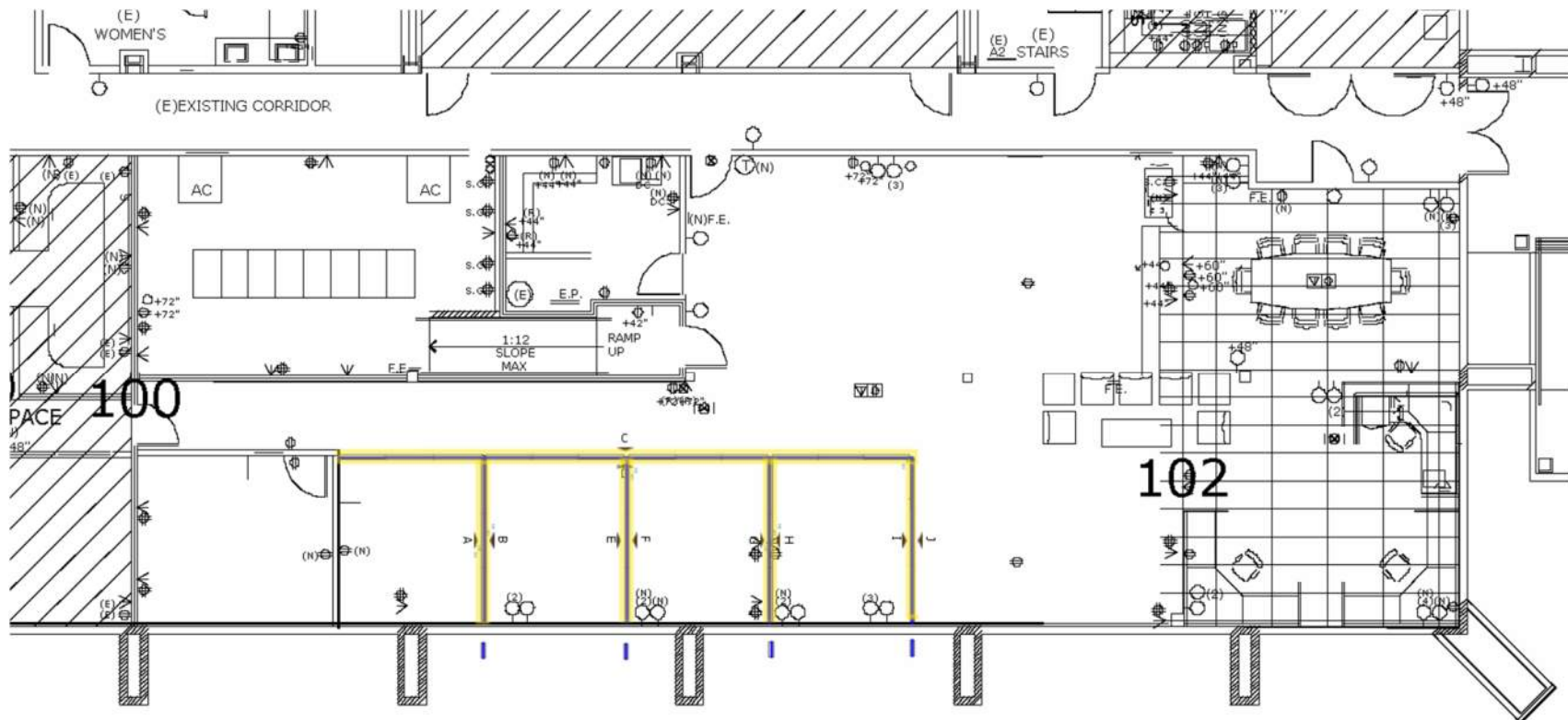
DIV13™

SB | *cera*



a division of
GIM Business Interiors

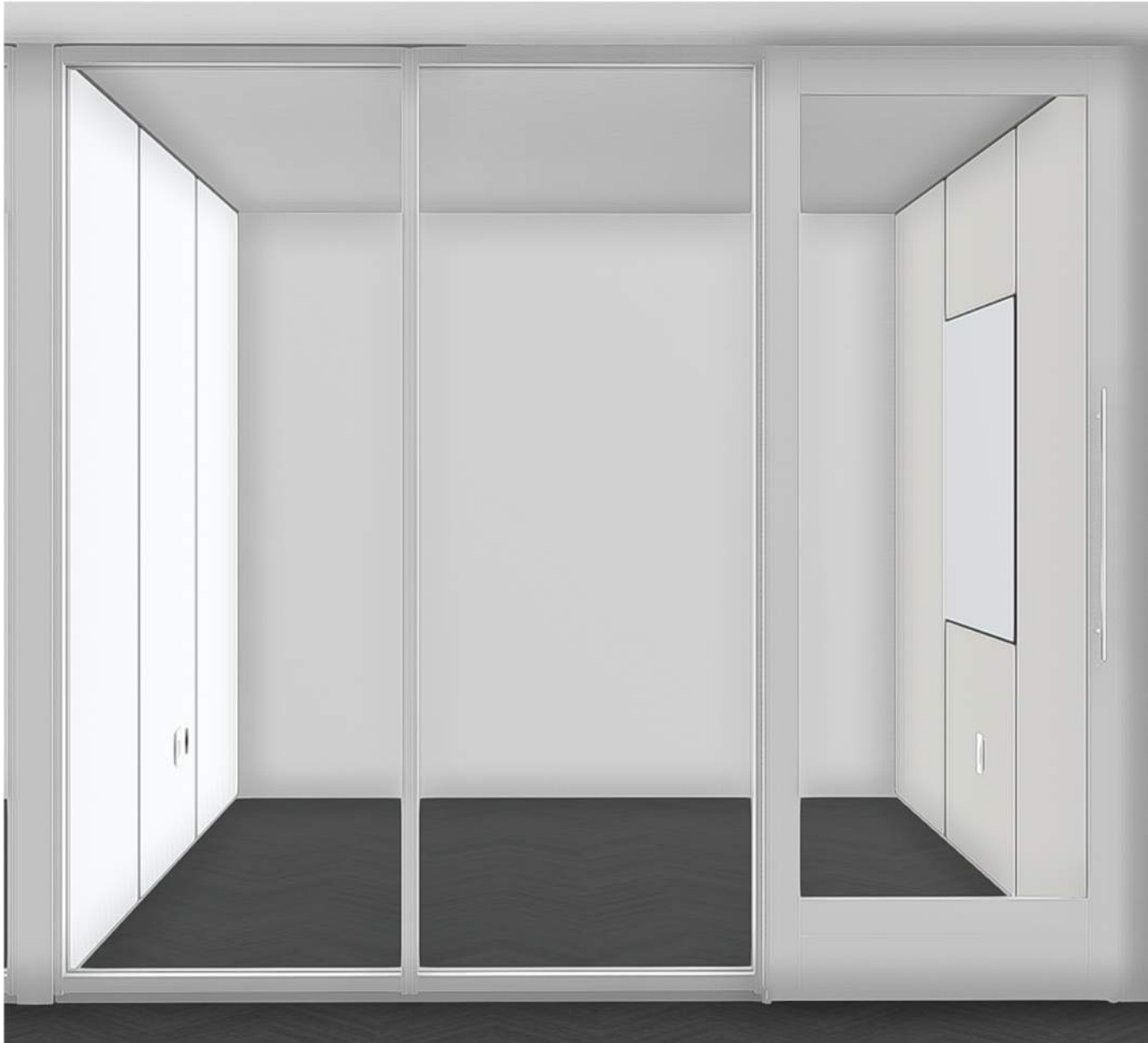
DIRTT SCOPE – SHOWN IN YELLOW CONCEPT IMAGE PROVIDED



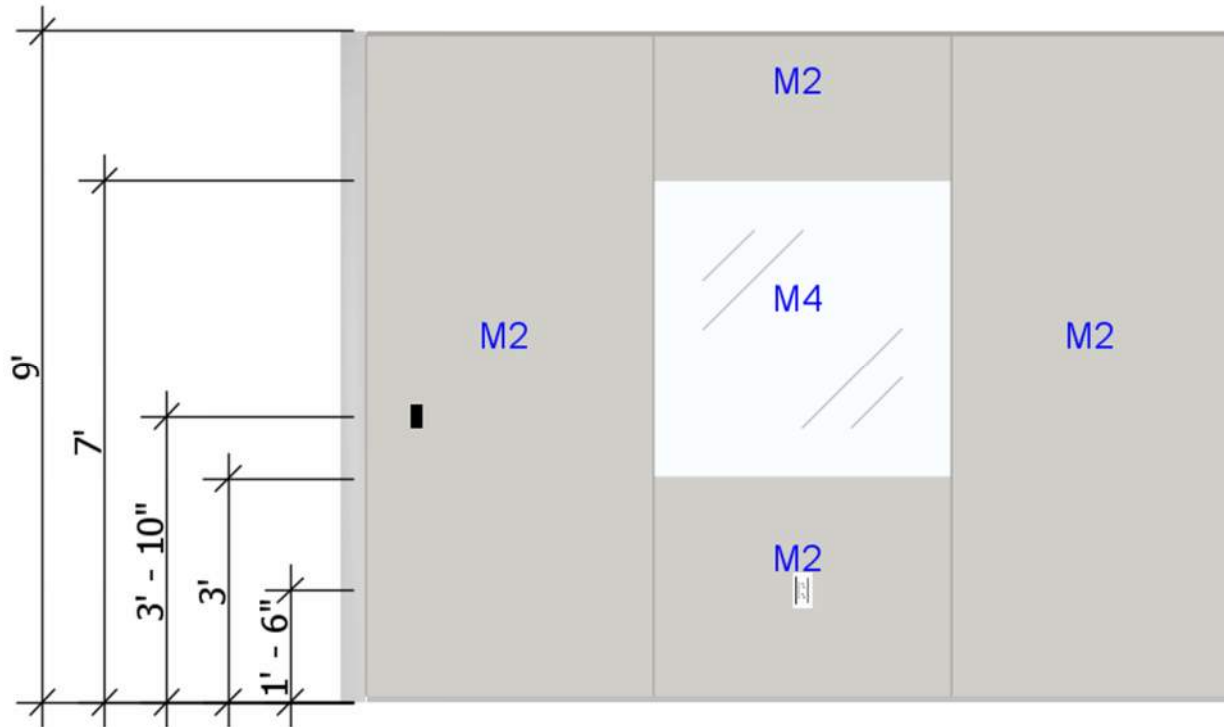
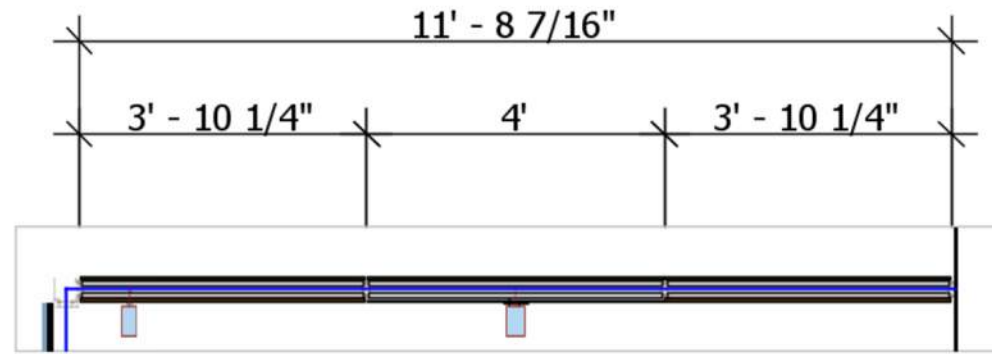
DIRTT 3D VIEW OF OFFICES



DIRTT 3D VIEW OF OFFICE



DIRTT OFFICE ELEVATION AT MARKER BOARD



Pricing

DIRTT WALLS/DOORS FLOOR 3	\$ 38,241.92
91 LF; 4 BARN DOORS; PISTON CLOSER; NO LOCKS; ASSUMES CEILINGS AT 9'-0" AFF	
DIRTT MODULAR POWER	\$ 2,705.16
ESTIMATE; TO BE COORDINATED	
FREIGHT	\$ 11,973.68
TRUCK TO SITE WITH FORKLIFT OFF-LOAD	
DIRTT SURCHARGE	\$ 1,433.15
MATERIAL ONLY; TAXABLE	
SERVICES	\$ 23,533.33
NORMAL BUSINESS HOURS; NO OVERTIME	
TAX (NOT ON LABOR) 8.75%	\$ 4,755.97
TOTAL	\$ 82,643.21

SIGNATURE OF APPROVAL:

DATE:

YOUR PURCHASE ORDER WILL BE WITH GM BUSINESS INTERIORS

DIV13 and DIRTT Industrialized Construction for
SBCERA



DESIGN ASSUMPTIONS:

- OFFICE FRONTS & SOLID WALLS TO 9'-0" TO GRID & TILE ABOVE; SEISMICALLY BRACED TO DECK ABOVE
- ALL EXPOSED PVC IS SILVER
- BARN DOORS 6MM CLEAR TEMPERED GLASS; ADA BASE; PISTON CLOSER; NO LOCKS; 30"H PULL
- EXPOSED EXTRUSIONS ARE CLEAR ANNOXIDIZED ALUMINUM
- WALLS TO HAVE PAINTED MDF SKINS WITH 2 LAYERS INSULATION
- 4'X4' BACK PAINTED GLASS MARKERBOARDS IN (3) OFFICES WITH 2' MARKER TRAY
- SINGLE GANG BACK BOX AND 3/4" CONDUIT ONLY FOR DATA DROPS, LIGHT SWITCHES AND T-STATS. POWER/CABLE, DEVICE AND PLATE BY ELECTRICIAN AND CABLE VENDOR
- MULLION CONNECTION AT EXTERIOR WINDOW WALL TBD

Payment Terms

50% DEPOSIT TO PLACE ORDER; 40% AT SUBSTANTIAL DELIVERY AND 10% AT COMPLETION

Pricing is valid for 30 days from the date on this proposal.

Exclusions, Assumptions & Considerations

EXCLUSIONS

- Demo of any and of all types
- Fees and labor expense associated with Permits, inspections, and deferred submittals.
- Storage fees not included; may apply if material is stored in our warehouse for more than 2 weeks.
- Any custom bracing structure for attachment caused by unforeseen obstacles not noted/communicated within a reasonable time or created after initial mobilization.
- Install/prep of extrusions for any AV room schedulers
- Patch and repair of existing conditions
- Any shimming/spacing accommodations for flooring transitions of any nature.
- All & any floor preparation (i.e. floor x-ray); include floor leveling concrete/thin-set mix labor and material
- Any plumbing, HVAC, technology/av, security, hardwired electrical, switching and life safety provisions
- Modifications to existing lights, mechanical grilles, sprinkler heads and light switches. Work must be completed prior to install of prefab walls. Compliance of code is the responsibility of the end user
- Parking costs
- Time/expense associated with training for security/safety
- Overtime
- Stair Carry
- Applied film or signage
- Exterior mullion mates or equal
- Backing in wall for wall mounted furniture items

ASSUMPTIONS & CONSIDERATIONS

- Access is on a maintained/paved road accessible to loading area
- Assumes 1 phase per floor; delivery/install during day shift; standard wages.
- Proper on-site/indoor staging/laydown area zoned for DIRT material.
- Site security scheduled by others
- Building access clear and free of trades and debris
- We will protect areas within our work area and path of travel.
- Conventional walls to be finished, sanded and painted. Flooring installed as well as wall base prior to the start of DIRT install.
- Clear and free access from all other trades in areas of installation
- DIRT walls installed over finished flooring; walls fully painted with rubber base installed.
- LEAD TIME: Product ships 3-4 weeks from time DIV13 field verifies site conditions, receives Purchase Order, 50% deposit and signed Shop Drawings. Ships directly to site with forklift off-load.
- Assumes all material will fit in elevator; elevator pads/protection by GC.
- Installers have access to restroom facilities and fresh drinking water

Exhibit A: Page 8



a division of
G|M Business Interiors